

You have a **VFD integrated 440T frame motor** installed in a production application that runs 24/7 and a bearing fails prematurely.

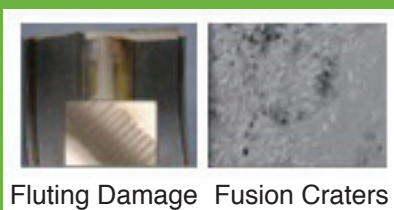
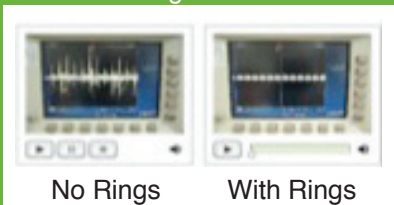
**How much does it cost to repair the motor?**

You won't have to worry about this when you order **your Century® motor** with and **AEGIS™ Shaft Grounding Ring™** installed!

## Features

- ✓ Coverage for 3-phase NEMA frames from 56 thru 440T frame
- ✓ Multiple 2-row clusters of conductive microfibers
- ✓ Controlled and repeatable installation process
- ✓ Patented AEGIS Shaft Grounding Ring design

### Shaft Voltage Measurement



**Variable Frequency Drives (VFD) integrated with AC motors induce destructive electrical voltages on the motor's shaft. Once these voltages exceed the resistance of the bearing lubricant, a discharge occurs through the bearings causing fusion craters, severe pitting, fluting damage, excessive bearing noise, and ultimately premature bearing failure.**

**Your** new Century motor, equipped with an AEGIS Shaft Grounding Ring, is protected from electrical bearing damage because the rings safely channel harmful induced shaft voltages away from the motor's bearings to ground via conductive micro fibers.





## Benefits

- End-user application flexibility across multiple product segments
- Suitable for operation in harsh industrial environments; never lose ground
- Enjoy maintenance-free bearing protection throughout the useful life of your electric motor
- Protects from dangerous electrical voltages induced by variable frequency drive operation while simultaneously minimizing your total cost of ownership thru lowered maintenance/operating costs

NEMA Frame Size	Part Number	List Price
56	CR37-SGR-56	\$395.00
143T-145T	CR37-SGR-143-145	\$441.00
182T-184T	CR37-SGR-182-184	\$456.00
213T-215T	CR37-SGR-213-215	\$472.00
254T-256T	CR37-SGR-254-256	\$681.00
284T-286T	CR37-SGR-284-365TS	\$711.00
284TS-286TS	CR37-SGR-254-256	\$711.00
324T-326T	CR37-SGR-324-405TS	\$788.00
324TS-326TS	CR37-SGR-284-365TS	\$788.00
364T-365T	CR37-SGR-364-449TS	\$950.00
364TS-365TS	CR37-SGR-284-365TS	\$950.00
404T-405T	CR37-SGR-404-405	\$1,038.00
404TS-405TS	CR37-SGR-324-405TS	\$1,038.00
444T-445T	CR37-SGR-444-449	\$1,327.00
444TS-445TS	CR37-SGR-364-449TS	\$1,327.00
447T/449T	CR37-SGR-444-449	\$1,327.00
447TS/449TS	CR37-SGR-364-449TS	\$1,327.00

## Comparison of Alternatives To Protect Against Induced Shaft Voltages

	Century Motor with AEGIS Shaft Grounding Ring	Insulating Sleeve	Ceramic/Hybrid Bearing	Copper or Bronze Metal Brush	Carbon Block Brush
Protects motor and attached equipment	YES	NO	NO	NO	NO
Provides long-term effectiveness	YES	NO	NO	NO	NO
Minimizes total cost of ownership	YES	NO	NO	NO	NO
Protects across entire speed curve	YES	YES	YES	NO	NO
Provides maintenance free protection	YES	YES	YES	NO	NO

*\*AEGIS Shaft Grounding Rings are guaranteed to protect any new motor up to 100HP/75kW against failure from electrical bearing fluting damage for the expected normal bearing life of the original motor bearings. The manufacturer of the AEGIS Shaft Grounding Ring will replace motor bearings if electrically induced fluting damage occurs.*

Distribution Services  
 1325 Heil Quaker Blvd.  
 LaVergne, TN 37086  
 Phone: (877) 893-2417  
 Fax: (800) 468-2062  
 www.regalbeloit.com

**CONTACT US NOW TO LEARN MORE!**

